

# Product data sheet

## E 3000



Spindle drive for particularly heavy roof windows

### AREAS OF APPLICATION

- Very heavy windows in the roof area
- Natural ventilation, smoke and heat extraction system, natural smoke and heat extraction device (SHEV)
- Use in the exhaust air system
- Installation on wooden, PVC or metal windows
- Frame installation



**PRODUCT FEATURES**

- Very high tensile and compressive force
- Robust and corrosion-resistant design with built-in end position damping
- Aluminium housing for highest design demands
- Extensive brackets allow versatile installation on main or secondary closing edges
- Synchronisation of max. four drives without external control unit
- Tested in accordance with EN 12101-2 (natural smoke and heat extraction devices)

**TECHNICAL DATA**

Productname	E 3000
Opening speed RWA	7.8 mm/s
Opening speed ventilation	7.8 mm/s
Force of pressure (max.)	3000 N
Holding force (max.)	25000 N
Tensile force	3000 N
Voltage at operation	24 V ± 25 %
Operating voltage	24 V DC
Current consumption	5 A
Power consumption	91 W
Residual ripple	20 %
Duty rating	30 %
Connector cable length	3 m
Special length of connector cable	5 m, 10 m
Min. core cross section	1 mm <sup>2</sup>
Number of cores	3 cores
Service temperature	-5 - 75 °C
IP rating	IP54
protection rating	III
Synchronising function	Yes
Type of additional locking mechanism	Locking drive
Type of stroke shortening	Factory setting
End position cut-off extended	electronic
End position cut-off retracted	electronic
Overload cut-off	Yes
Complete opening within 60 s	yes, up to 300 mm stroke
SHEV tested	Yes
SHEV additional information	yes, up to 300 mm stroke
Number synchronisation drive units	4
KNX ability	No



OUTWARD-opening roof window

Yes

**VARIANTS / ORDER INFO****Designation**

E 3000

E 3000

E 3000

E 3000 special version

GEZE E 3000 Syncro \*

GEZE E 3000 Syncro \*

GEZE E 3000 Syncro \*

GEZE E 3000 Syncro special version \*

**ACCESSORIES****ROOF WINDOW BRACKET E 3000 \***

For installation of the E 1500 S and E 3000 spindle drives

**Designation**

Roof window bracket E 3000

Roof window bracket E 3000

Roof window bracket E 3000

**BRACKET MOUNT E 3000 NSK AP \***

For roof window installation of the E 1500 S and E 3000 spindle drives

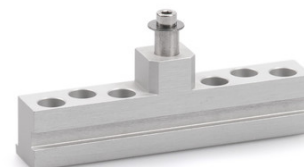
**Designation**

Bracket mount E 3000 NSK AP \*



## LEAF BRACKET E 3000 NSK HE \*

For roof window installation of the E 1500 S and E 3000 spindle drives



### Designation

Leaf bracket E 3000 NSK HE \*

## CONICAL SLEEVE E 3000

For installation of the E 1500 S and E 3000 spindle drives



### Designation

Conical sleeve E 3000

Conical sleeve E 3000

Conical sleeve E 3000

## LEAF BRACKET E 1500/ E 3000 NSK AP \*

For installation of the E 1500 N, E 1500 S, E 3000 and E 250 NT spindle drives



## LEAF BRACKET E 3000 \*

For installation of the E 1500 S and E 3000 spindle drives



### Designation

Leaf bracket E 3000 \*

Leaf bracket E 3000 \*

Leaf bracket E 3000 \*



## LEAF BRACKET E 3000 HSK HE \*

For installation of the E 1500 S and E 3000 spindle drives



### Designation

Leaf bracket E 3000 HSK HE \*

## LEAF BRACKET E 3000 NSK A-HU \*

For installation of the E 1500 S and E 3000 spindle drives



### Designation

Leaf bracket E 3000 NSK A-HU

## LEAF BRACKET E 3000 NSK W-HU \*

For installation of the E 1500 S and E 3000 spindle drives



### Designation

Leaf bracket E 3000 NSK W-HU \*

## BRACKET E 3000 NSK \*

For roof window installation of the E 1500 S and E 3000 spindle drives



### Designation

Bracket E 3000 NSK \*



## BRACKET E 3000 NSK S \*

For roof window installation of the E 1500 S and E 3000 spindle drives



### Designation

Bracket E 3000 NSK S \*

## BRACKET MOUNT E 3000 HSK

For roof window installation of the E 1500 S and E 3000 spindle drives



### Designation

Bracket mount E 3000 HSK

## BRACKET MOUNT E 3000 NSK \*

For roof window installation of the E 1500 S and E 3000 spindle drives



### Designation

Bracket mount E 3000 NSK \*

## POWER SUPPLY NT 6.25 A-24 V HS \*

24 V power supply for top hat rail mounting



### Designation

Power supply NT 6.25 A-24 V HS \*





---

\* The products designated above may vary in form, type, characteristics, function, or availability depending on the country. Please get in touch with your GEZE contact person if you have any questions.