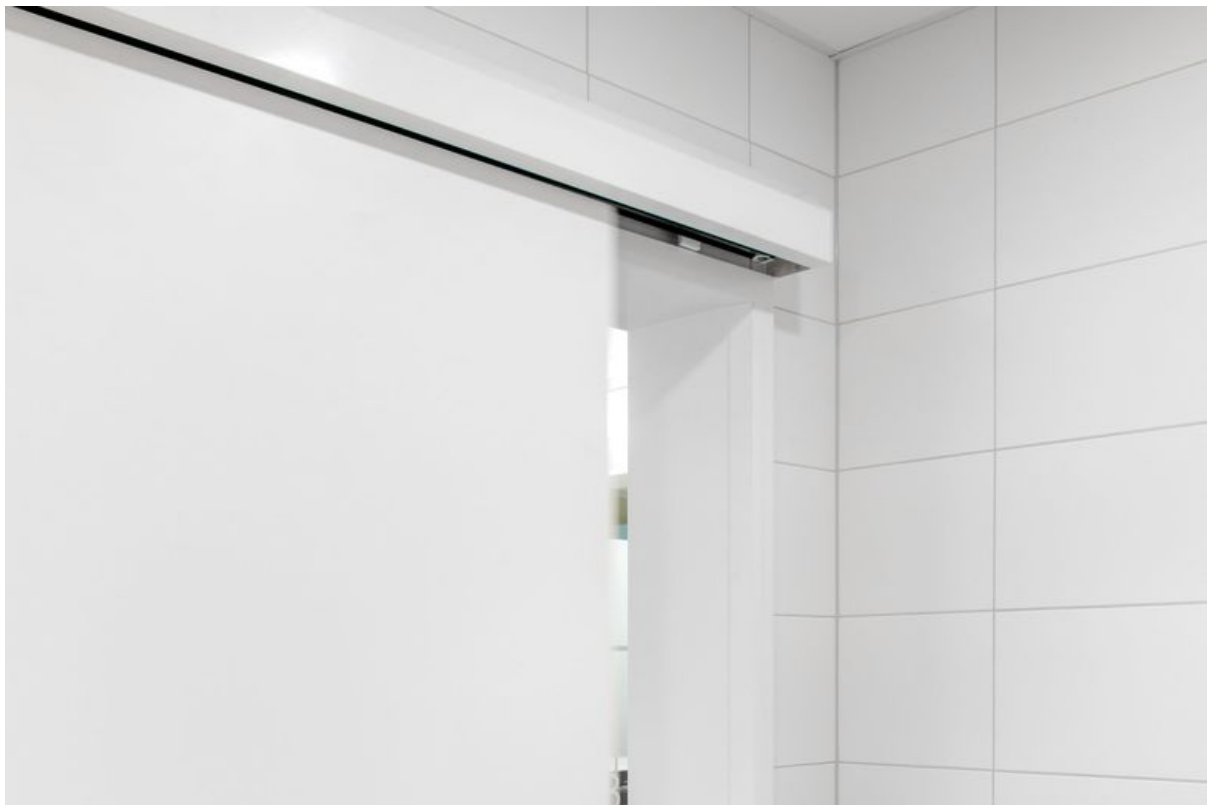


Product data sheet

Perlan AUT-NT wood



Automation for Perlan on doors with a leaf weight of up to 80 kg

AREAS OF APPLICATION

- Sliding door automation for Perlan on light to medium-weight interior doors
- Particularly suitable for private living areas
- Single and multiple-leaf timber sliding doors
- Mounting to the wall and also to the ceiling via additional ceiling brackets
- Not for escape or rescue routes

PRODUCT FEATURES

- For automation of Perlan internal sliding doors with a leaf weight of max. 80 kg
- Adjustable comfort and safety functions
- Max. speed can be set up to 0.3 m/s
- Low-energy sliding door drive in accordance with EN 16005

TECHNICAL DATA

Productname	Perlan AUT-NT wood
-------------	--------------------

PART

PERLAN 140 SET FOR TIMBER LEAVES

Sliding door fitting for glass leaves with up to 140 kg leaf weight



Designation	Description	Ident-No.	Colour	Leaf width (min.)	Leaf width (max.)
Perlan 140 set for timber leaves	For ceiling installation with standard suspension plate, up to 140 kg leaf weight	119354	EV1	500 mm	1040 mm
Perlan 140 set for timber leaves	For ceiling installation with standard suspension plate, up to 140 kg leaf weight	119355	EV1	500 mm	1240 mm
Perlan 140 set for timber leaves	For ceiling installation with standard suspension plate, up to 140 kg leaf weight	119353	EV1	500 mm	840 mm
Perlan 140 set for timber leaves	For ceiling installation with standard suspension plate, up to 140 kg leaf weight	119356	EV1	500 mm	1440 mm
Perlan 140 set for timber leaves	For ceiling installation with standard suspension plate, up to 140 kg leaf weight	119357	EV1	500 mm	1640 mm

TRACK PERLAN 140

Track for sliding door fitting



Designation	Description	Ident-No.	Colour
Track Perlan 140	with countersunk drill holes (prepared for Perlan SoftStop)	142518	EV1
Track Perlan 140	with countersunk drill holes (prepared for Perlan SoftStop)	128660	EV1
Track Perlan 140	with countersunk drill holes (prepared for Perlan SoftStop)	128662	Stainless steel optic
Track Perlan 140	with countersunk drill holes (prepared for Perlan SoftStop)	135061	Stainless steel optic
Track Perlan 140	with countersunk drill holes (prepared for Perlan SoftStop)	135048	EV1
Track Perlan 140	with countersunk drill holes (prepared for Perlan SoftStop)	135050	Stainless steel optic
Track Perlan 140	with countersunk drill holes (prepared for Perlan SoftStop)	135049	Stainless steel optic
Track Perlan 140	with countersunk drill holes (prepared for Perlan SoftStop)	135047	EV1
Track Perlan 140	with countersunk drill holes (prepared for Perlan SoftStop)	142519	EV1
Track Perlan 140	with countersunk drill holes (prepared for Perlan SoftStop)	135046	EV1

PERLAN 140 SET FOR TIMBER LEAVES

Sliding door fitting for wall installation and timber leaves



Designation	Description	Ident-No.	Colour	Leaf width (min.)	Leaf width (max.)
Perlan 140 set for timber leaves	For wall installation with suspension plate and standard wall bracket, up to 140 kg leaf weight	119338	EV1	500 mm	1040 mm
Perlan 140 set for timber leaves	For wall installation with suspension plate and standard wall bracket, up to 140 kg leaf weight	119340	EV1	500 mm	1440 mm
Perlan 140 set for timber leaves	For wall installation with suspension plate and standard wall bracket, up to 140 kg leaf weight	119351	EV1	500 mm	1640 mm
Perlan 140 set for timber leaves	For wall installation with suspension plate and standard wall bracket, up to 140 kg leaf weight	119339	EV1	500 mm	1240 mm
Perlan 140 set for timber leaves	For wall installation with suspension plate and standard wall bracket, up to 140 kg leaf weight	119337	EV1	500 mm	840 mm

ACCESSORIES

KFT ELBOW SWITCH

Plastic elbow switch, IP rating IP20, for activation of automatic doors



Designation	Description	Ident-No.	Colour	Dimensions	Type of installation
KFT elbow switch	Very flat design, IP rating IP20	114077	stainless steel colour	90 x 179 x 23 mm	Surface-mounted installation
KFT elbow switch	Very flat design, IP rating IP20	114078	white	90 x 179 x 23 mm	Surface-mounted installation

POWER SUPPLY PERLAN AUT-NT *

Power supply for Perlan NT control unit



Designation	Ident-No.
Power supply Perlan AUT-NT *	139994

TOOTHED BELT PERLAN AUT-NT / AUT

Toothed drive belts for automatic sliding door fittings



Designation	Ident-No.
Toothed belt Perlan AUT-NT / AUT	141500

TOOTHED BELT PERLAN AUT-NT / AUT 2, BESPOKE

Toothed drive belts for automatic sliding door fittings



Designation	Ident-No.
Toothed belt Perlan AUT-NT / AUT 2, bespoke	141561

CONCEALED SUSPENSION PROFILE SET

For milling into the wooden leaf



Designation	Description	Ident-No.
Concealed suspension profile set	2 pieces, for milling into the timber leaf, including suspension bolts and flat open-ended spanner for vertical adjustment	138015

SPACER PROFILE 10 MM FOR CONCEALED WALL BRACKET PERLAN 43 MM

Spacer profile for wall installation for leaf thicknesses up to 43 mm



Designation	Description	Ident-No.	Colour
Spacer profile 10 mm for concealed wall bracket Perlan 43 mm	for use with "concealed wall bracket up to 43 mm", stackable up to 20 mm spaces	136679	EV1
Spacer profile 10 mm for concealed wall bracket Perlan 43 mm	for use with "concealed wall bracket up to 43 mm", stackable up to 20 mm spaces	136711	EV1
Spacer profile 10 mm for concealed wall bracket Perlan 43 mm	for use with "concealed wall bracket up to 43 mm", stackable up to 20 mm spaces	136712	EV1
Spacer profile 10 mm for concealed wall bracket Perlan 43 mm	bespoke configuration	136717	
Spacer profile 10 mm for concealed wall bracket Perlan 43 mm	for use with "concealed wall bracket up to 43 mm", stackable up to 20 mm spaces	136680	EV1
Spacer profile 10 mm for concealed wall bracket Perlan 43 mm	for use with "concealed wall bracket up to 43 mm", stackable up to 20 mm spaces	136716	Stainless steel optic
Spacer profile 10 mm for concealed wall bracket Perlan 43 mm	for use with "concealed wall bracket up to 43 mm", stackable up to 20 mm spaces	136714	Stainless steel optic
Spacer profile 10 mm for concealed wall bracket Perlan 43 mm	for use with "concealed wall bracket up to 43 mm", stackable up to 20 mm spaces	136715	Stainless steel optic

Designation	Description	Ident-No.	Colour
Spacer profile 10 mm for concealed wall bracket Perlan 43 mm	for use with "concealed wall bracket up to 43 mm", stackable up to 20 mm spaces	136713	Stainless steel optic

DOOR STOP

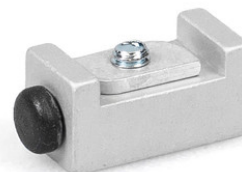
End stop for sliding leaves



Designation	Ident-No.
Door stop	000339
Door stop	000342

BUFFER FOR CONTINUOUS FLOOR GUIDE *

Buffer for continuous floor guides integrated in the floor



Designation	Ident-No.
Buffer for continuous floor guide	124655

HEIGHT COMPENSATION MECHANISM / CEILING DISTANCE SET, WITH VARIABLE ADJUSTMENT

Height compensation with variable adjustment for ceiling installation of tracks



Designation	Description	Ident-No.
Height compensation mechanism / ceiling distance set, with variable adjustment	6 pieces, height compensation mechanism with variable adjustment from 13 mm to 18 mm. For use for ceiling mounting using clip-on cover 100/145 as well as for general use on uneven ceilings	138099

SET CONTROL UNIT WITH PUSH BUTTON PERLAN AUT-NT

Control unit and push button for Perlan AUT



Designation	Ident-No.
Set control unit with push button Perlan AUT-NT	141151

DOOR PULL HANDLE, CONFIGURED *

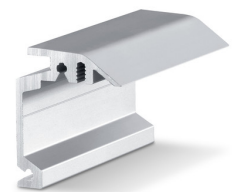
Push bar – round design for installation on glass leaves



Designation	Ident-No.	Colour
Door pull handle, configured *	127616	Stainless steel

WALL BRACKET CONCEALED PERLAN

Wall bracket for concealed wall installation of tracks



Designation	Description	Ident-No.	Colour	Type of installation
Wall bracket concealed Perlan	For use up with to 43 mm leaf thickness	130445	Stainless steel optic	Wall
Wall bracket concealed Perlan	For use up with to 43 mm leaf thickness	130444	Stainless steel optic	Wall
Wall bracket concealed Perlan	For use up with to 43 mm leaf thickness	130447	Stainless steel optic	Wall
Wall bracket concealed Perlan	For use up with to 43 mm leaf thickness	130439	EV1	Wall
Wall bracket concealed Perlan	For use up with to 43 mm leaf thickness	130440	EV1	Wall
Wall bracket concealed Perlan	For use up with to 43 mm leaf thickness	130446	Stainless steel optic	Wall
Wall bracket concealed Perlan	For use up with to 43 mm leaf thickness	130435	EV1	Wall
Wall bracket concealed Perlan	For use up with to 43 mm leaf thickness	130436	EV1	Wall
Wall bracket concealed Perlan	For use up with to 43 mm leaf thickness	130438	EV1	Wall



COMPLETE CLIP-ON COVER SET 100

Clip-on cover for covering Perlan door fitting systems



Designation	Description	Ident-No.	Type of installation
Complete clip-on cover set 100	for wall and ceiling mounting, continuous cover, bespoke configuration	138098	Wall, Ceiling

* The products designated above may vary in form, type, characteristics, function, or availability depending on the country. Please get in touch with your GEZE contact person if you have any questions.