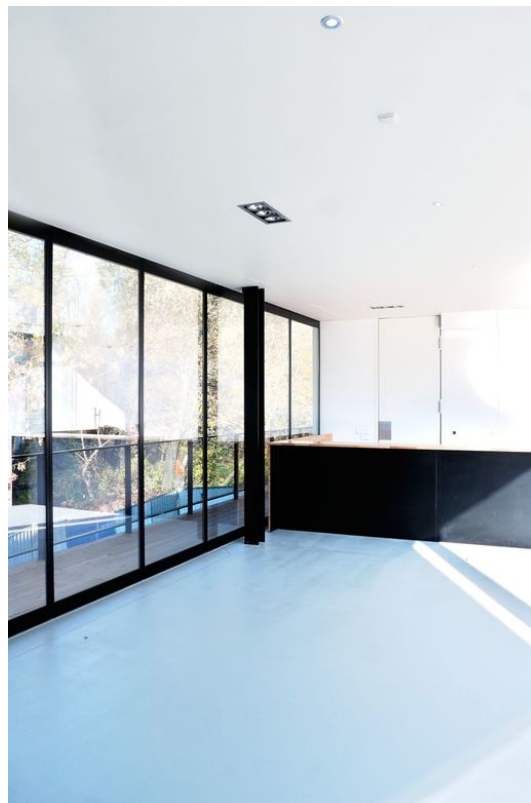


# Product data sheet

## **MSW sliding swing door with stop function – fine-framed \***



Access element for closed glass partitioning walls

### **AREAS OF APPLICATION**

- Internal and protected external area
- Freely selectable position in the system front
- Can be used up to 3000 mm clear height
- Can be used up to 1100 mm element width

# MSW sliding swing door with stop function - fine-framed \*



## PRODUCT FEATURES

- Horizontal and vertical profiles for glass framing
- Toughened safety glass ESG 10 mm flush on one side
- Insulating glass 22 mm centred applicable
- Element weight up to 125 kg
- Integrated locking facility (Boxer 2-4V)
- Dry glazing by means of circumferential glazing gasket
- Can be combined with all other element types - fine-framed

## TECHNICAL DATA

Productname

MSW sliding swing door with stop function - fine-framed \*

\* The products designated above may vary in form, type, characteristics, function, or availability depending on the country. Please get in touch with your GEZE contact person if you have any questions.